

### Descriptions and Applications

The CEP-4000 series is a pressure-independent combination controller-actuator designed primarily for use on variable air volume terminal units. Cooling and heating air flow is sensed by a temperature-compensated hot-wire anemometer. Velocity sensing is unaffected by changes in the duct air temperature.

The CEP-4000 series offers full-range flow control of VAV terminal units when used with the CTE-1000/1100/5000 series as well as the CTE-5202 room thermostats. Air-velocity flow control limits are set at the room thermostat or remotely with the REE-1012 remote-limits accessory module.

The actuator section provides a magnetic clutch that allows the actuator to be stalled at either end of stroke, eliminating the requirement for mechanical stops or end switches. It is available with (100°, 60°, and 45°) built-in stops or (360°) no stops.

### Accessories

#### Air Flow Sensors, Standard

SSE-1001/1002	4"/8" insertion (see Models chart)
SSE-2001/2002	4"/8" insertion, with thermistor

#### Air Flow Sensors, Silicone Conformal Coated\*

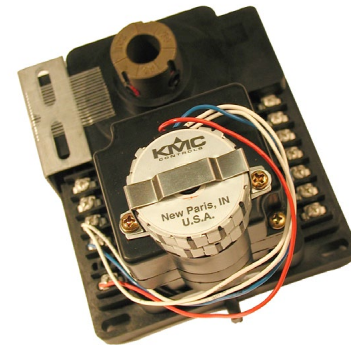
SSE-1011/1012	4"/8" insertion
SSE-2011/2012	4"/8" insertion, with thermistor

#### Thermostats

CEE-1100 Series	Thermostats, remote
CTE-1000 Series	Thermostats
CTE-1100 Series	Thermostats
CTE-5000 Series	Thermostats
CTE-5202	Thermostat with LCD display

#### Aux. Switches, Feedback, and Miscellaneous

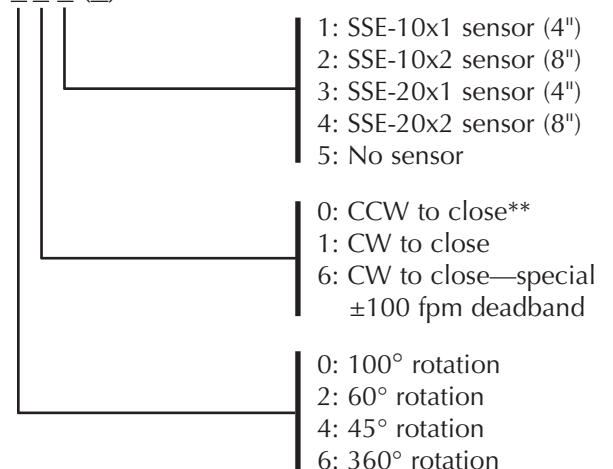
CME-100x	Rotary cam auxiliary switches
CME-200x	Feedback potentiometers
HFO-0011	Mounting adaptor for 3/8" shaft
HPO-0062	Replacement motor/gearbox (for date codes after 9225)
REE-10xx/400x	Relay modules



### Models

Use this chart to make your selection (but not all possible model configurations may still be available—check the [web site](#) for current information):

#### CEP- 4X Y Z (C)\*

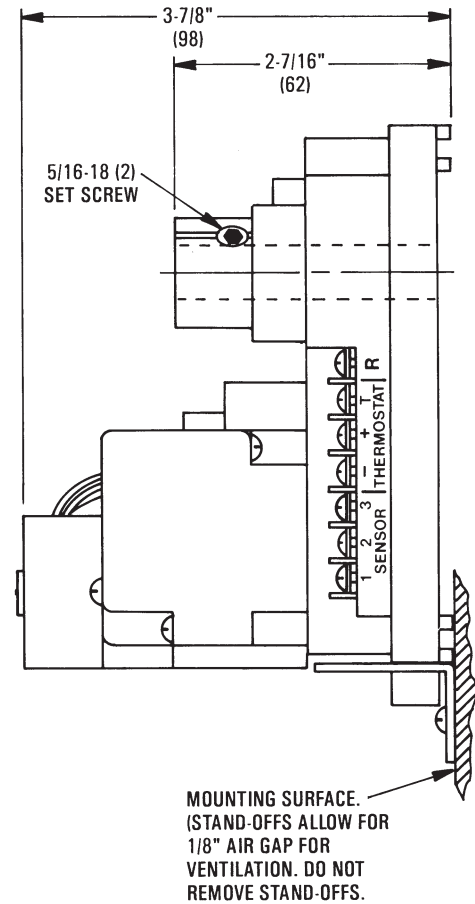
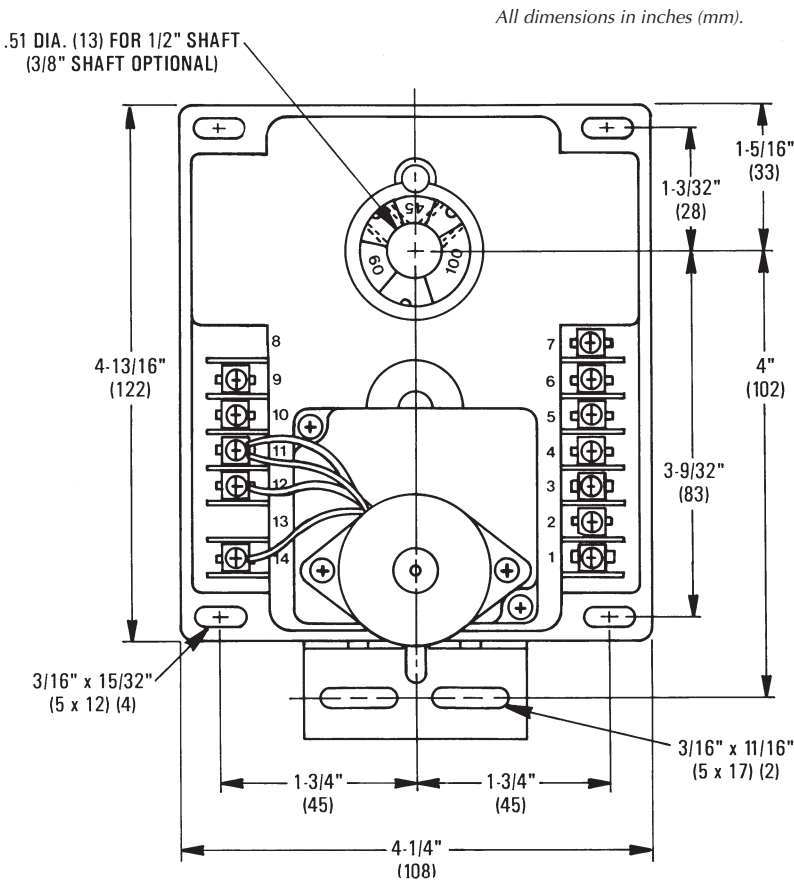


\*NOTE: Model numbers with a "C" on the end come with a silicone conformal coated (SSE-xx1x) air sensor. (Not all possible model number configurations may be available. See the [web site](#).)

\*\*NOTE: The default rotation direction can easily be reversed by swapping the red and blue motor wires.

When replacing an older model, the CEP-4995 (100° rotation, CW to close, no sensor) is a "universal replacement" for most applications and will replace **MOST** CEP-1000/3000/4000 series controllers. If replacing a CEP-1000 or CEP-3000 series controller, the REE-1000 series relay may also need to be replaced with the equivalent REE-4000 series module. See the [CEP-4000 Applications Guide](#) for more information.

## Details



## Specifications

<b>Supply Voltage</b>	24 VAC -15/+20%, 50/60 Hz, Class 2
<b>Supply Power</b>	9 VA
<b>Output Supply</b>	9.1 VDC (22 mA)
<b>Output Torque</b>	45 ±10 in-lbs. (5 ±1 N•m)
<b>Velocity Range</b>	0–3000 fpm (15.24 m/s)
<b>Velocity Deadband</b>	±50 fpm
<b>Velocity Output</b>	1–5 VDC (0–3000 fpm)
<b>Reset Voltage</b>	3–6 VDC (0–3000 fpm)
<b>Angular Rotation</b>	45°, 60°, 100°, 360°
<b>Stroke Time</b>	18° per minute @ 60 Hz, 15° per minute @ 50 Hz
<b>Mounting</b>	Direct to 1/2" (13 mm) diameter shaft or with an HFO-0011 adaptor to 3/8" (10 mm) diameter shaft
<b>Material</b>	Glass-filled nylon
<b>Weight</b>	1.75 lb. (0.79 kg)
<b>Connections</b>	Plated screw terminals

## Temperature Limits

Operating	40° to 120° F (4° to 49° C)
Shipping	-40° to 140° F (-40° to 60° C)

## More Information

For installation instructions, see the [CEP-4000 Installation Guide](#).

For principles of operation, troubleshooting, calibration procedures, and sample applications, see the [CEP-4000 Applications Guide](#) and the [CTE-5202 Applications Guide](#).

**KMC Controls, Inc.**

19476 Industrial Drive

New Paris, IN 46553

574.831.5250

[www.kmcontrols.com](http://www.kmcontrols.com); [info@kmcontrols.com](mailto:info@kmcontrols.com)